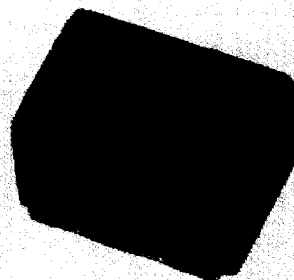


NEW**MODEL
MD-456****DOUBLE BALANCED MIXER**
RF, LO 5-1000 MHz IF DC-1000 MHzLO Power +7 dBm
Surface Mount
MCL Model RMS-2 Replacement**Guaranteed Specifications***

(From -55°C to +85°C)

Frequency Range	RF, LO Ports	5 - 1000 MHz
	IF Port	DC - 1000 MHz
Conversion Loss	5 - 500 MHz	8.0 dB Max
	500 - 1000 MHz	9.5 dB Max
Isolation	LO to RF	5 - 50 MHz 40 dB Min
		50 - 500 MHz 20 dB Min
		500 - 1000 MHz 18 dB Min
	LO to IF	5 - 50 MHz 30 dB Min
		50 - 500 MHz 20 dB Min
		500 - 1000 MHz 12 dB Min
	RF to IF	5 - 50 MHz 30 dB Min
		50 - 500 MHz 17 dB Min
		500 - 1000 MHz 10 dB Min

Operating Characteristics

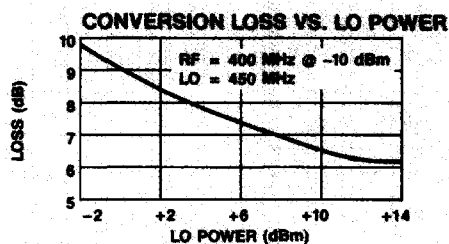
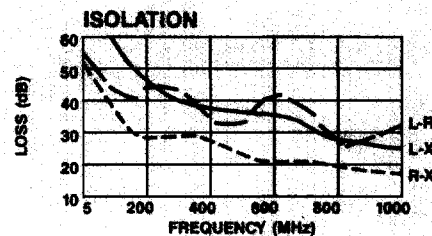
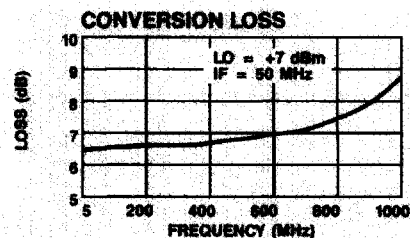
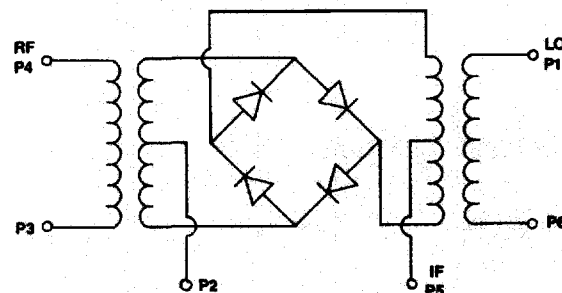
Impedance	50 Ohms Nominal
Maximum Input	
Total Power	50 Max
IF Port Current	40 mA Max
DC Polarity	Neg
DC Offset	≤ 2.0 mV Typ
RF Input for 1dB Compression	+2.0 dBm Typ
RF Input for 1 dB Desensitization	0.0 dBm Typ
SSB Noise Figure	Within 1.0 dB of Conversion
Two-Tone IM Ratio	60 dB Typ at 160 MHz
(with -10 dBm input, each	52 dB Typ at 500 MHz
tone and 50 & 60 MHz IF)	42 dB Typ at 1000 MHz
Package Type	(SF-3)
	(See page 490 for physical dimensions.)
Pin Configuration	RF; P4, LO; P1, IF; P5

*All specifications apply when operated at +7 dBm available LO power with 50 ohm source and load impedance, and with pins 2, 3 & 6 grounded.

Ordering Information

Model No.	Connectors	Unit Price (1-24 Units)
MD-456	PIN	\$9.90

Delivery is from stock.

Typical Performance**Schematic****ANZAC****Make the Connection...****Adams Russell**

80 Cambridge Street, Burlington, MA 01803 Fax (617) 273-1921

COMPONENTS GROUP

For Technical Information, Call (617) 273-3333

For Ordering Information, Call (617) 273-3333

320