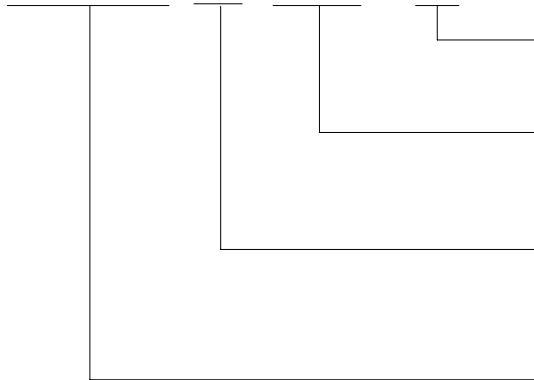


ORDERING CODE 订购代码

HLS-14F3 D - DC12V - C



CONTACT FORM

C:2 FORM C A:2 FORM A

NOMINAL VOLTAGE

DC3V,DC5V,DC6V,DC9V,DC12V,DC24V,DC48V

COIL

D...STANDARD|0.72W|

L...HIGH SENSITIVE|0.53W|

TYPE

CONTACT DATA 触点参数:

| | | | |
|----------------------------|----------|-------------------|-------------------------|
| Contact Form | 触点形式 | 2A /2C | |
| Contact Material | 触点材料 | Ag Alloy | |
| Contact Ratings | 触点负载 | 5A240VAC/5A 30VDC | |
| Max Switching Voltage | 最大转换电压 | 250VAC/110VDC | |
| Max Switching Current | 最大转换电流 | 5A | |
| Max Switching Power | 最大转换功率 | 1250VA/150W | |
| Initial Contact Resistance | 接触电阻(首次) | 50mΩ Max | at6VDC 1A |
| Life Expectancy Electrical | 电气寿命 | 100,000 | Operations (rated load) |
| Life Expectancy Mechanical | 机械寿命 | 10,000,000 | Operations (no load) |

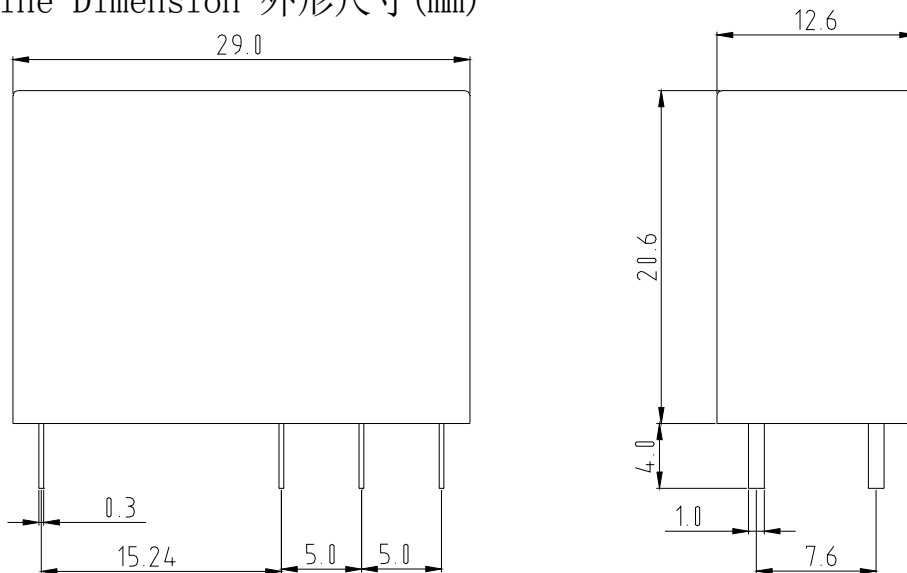
GENERAL DATA 一般参数:

| | | | |
|---|-------------|---------------------------------|------|
| Insulation Resistance | 绝缘阻值 | 1000MΩ Min at500VDC | |
| Dielectric Strength Between Open Contacts | 触点间耐压 | 1000VAC 50-60HZ (1 minute) | |
| Dielectric Strength Between Contacts And Coil | 触点与线圈间耐压 | 5000VAC 50-60HZ (1 minute) | |
| Operate Time | 吸合时间 | 15ms max | |
| Release Time | 释放时间 | 8ms max | |
| Ambient Temperature | 环境温度 | -30°C to +70°C | |
| Shock Resistance 冲击 | Malfunction | 动作极限 | 10G |
| | Destruction | 破坏极限 | 100G |
| Vibration Resistance | 振动 | 10-55Hz, 1.5mm double amplitude | |
| Ambient humidity | 湿度 | 20-85% RH | |
| Weight | 重量 | Approx 13g | |
| Safety Standard | 安全标准 | TUV CE CQC | |

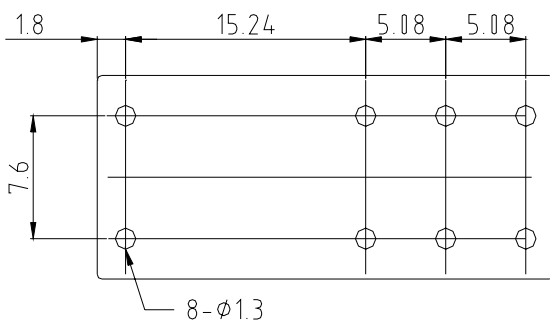
COIL DATA 线圈参数: (@20°C)

| Rated Voltage 额定电压 (VDC) | Coil Resistance Ω ($\pm 10\%$) 线圈阻值 | | Max Operate Voltage 最大吸合电压 (VDC) | Min Release Voltage 最小释放电压 (VDC) | Max Applied Voltage 最大允许电压 (VDC) |
|--------------------------------|---|-------|--|--|--|
| | 0.53W | 0.72W | | | |
| 3 | 17 | 12.5 | 2.4 | 0.15 | 3.9 |
| 5 | 50 | 36 | 4 | 0.25 | 6.5 |
| 6 | 68 | 50 | 4.8 | 0.3 | 7.8 |
| 9 | 155 | 115 | 7.2 | 0.45 | 11.7 |
| 12 | 270 | 200 | 9.6 | 0.6 | 15.6 |
| 24 | 1100 | 820 | 19.2 | 1.2 | 31.2 |
| 48 | 4400 | 3300 | 38.4 | 2.4 | 62.4 |

Outline Dimension 外形尺寸 (mm)

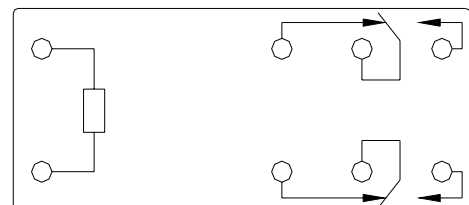


PC Board layout 安装图



(Bottom View)底视

Wiring Diagram 接线图



(Bottom View)底视